



**Tertiary
Education
Commission**

Te Amorangi
Mātauranga Matua



TEC Roadshow 2016

Welcome

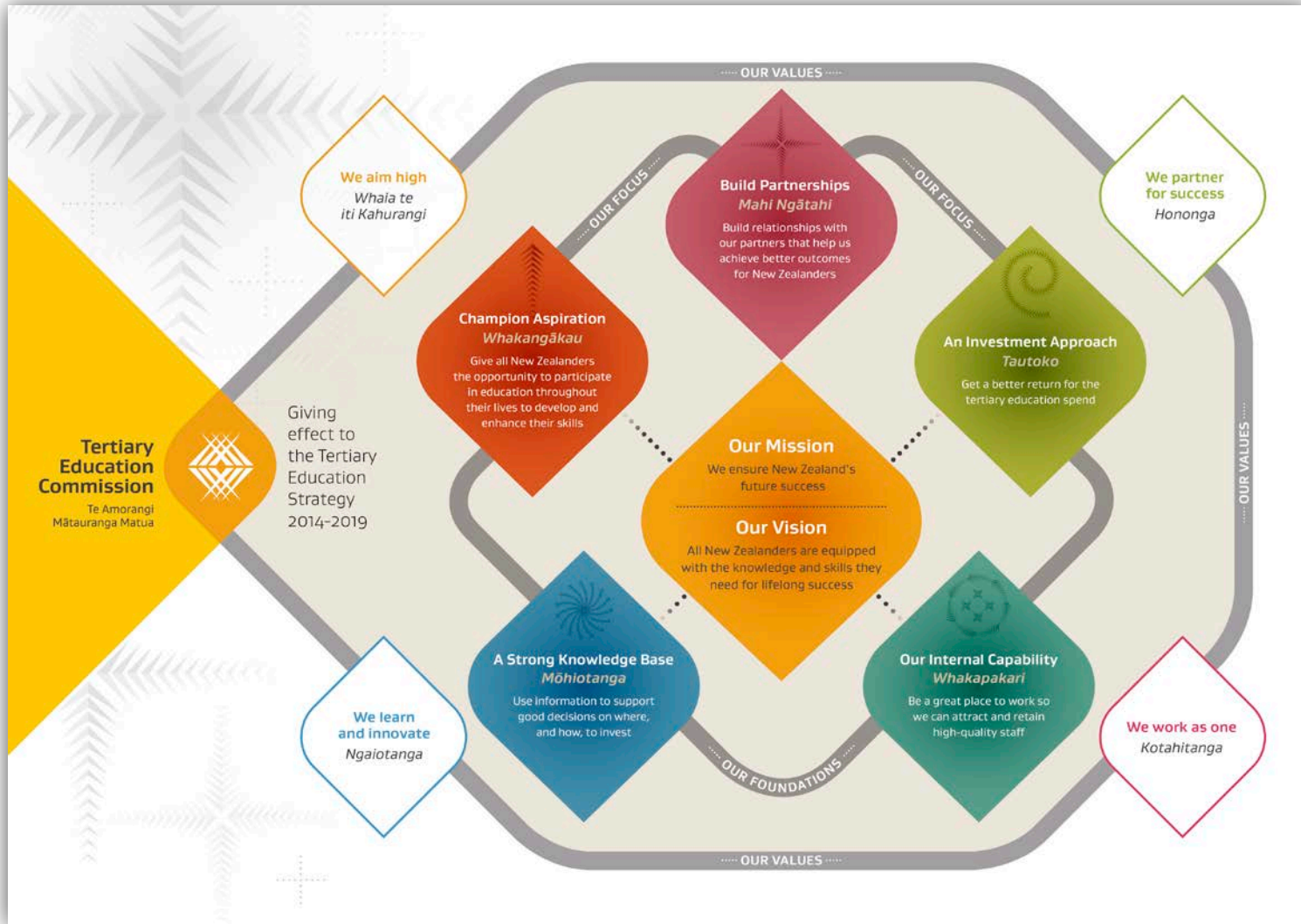


Agenda

- › What we'll cover today:
 - Welcome
 - TEC's current strategic approach and key initiatives
 - Demonstration of new tools
 - Where to from here?



Strategy





Where are we at?

Getting better returns for the government's investment in tertiary education

This system-wide approach driven by need to:

- › Increase NZ's productivity
- › Do better for targeted groups of learners
- › Become more flexible and responsive
- › Futureproof tertiary education system
- › Give effect to the Tertiary Education Strategy.

Implementation of investment approach will:

- › Improve outcomes for learners
- › Improve NZ's social and economic outcomes
- › Facilitate responsible system stewardship by the TEC.



Māori and Pasifika learners

- › Rolling out specific strategies to lift achievement and success for Māori and Pasifika learners.
- › System-wide view, looking for innovative ways to increase participation and success.
- › Series of initiatives / pilots targeting pastoral care, quality educators.
- › Leveraging investment planning opportunities.
- › Using parity measures as indicators.



Investment approach - quick wins

We delivered a range of quick wins as part of the longer-term investment approach work:

- › Identifying strategic investment opportunities in key areas such as Primary Industries, and Northland
- › Reduced compliance eg Investment Plans
- › Developed more robust performance indicators
- › Increased funding flexibility.



Current investment plan round – what have we achieved?

- › Clearer about our priorities and what we want to achieve.
- › Better use of information.
- › Lifted the bar internally.
- › Resulting in...
 - a move towards outcomes
 - and greater emphasis on the learner.



Educational Performance Indicators – an example

- › New methodologies
- › Value of the consultation process.
 - We consulted. You told us. We listened.
- › Benefits of new approach are:
 - Will provide TEOs and the TEC with more meaningful information
 - Removes inherent fluctuations from using EFTS-weighted measures.



Educational Performance Indicators

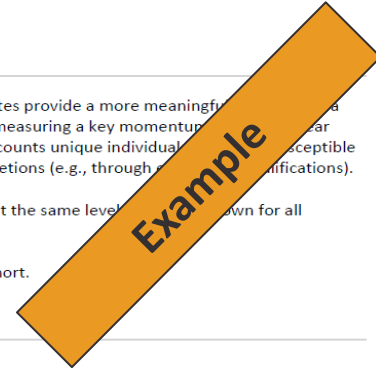
Cohort-Based Educational Performance Indicators Example University 2015 Reporting Year

This report provides the results of the new cohort-based qualification completion and first year retention rates for Example University. These rates provide a more meaningful measure of a tertiary education organisation's educational performance by tracking the results of learners that start in a given year (the starting cohort) and measuring a key momentum indicator (first year retention) toward completing a longer qualification. In contrast to the EFTS-weighted qualification completion rate, the cohort-based measure counts unique individuals and is not susceptible to rate changes due to external factors such as fluctuations in enrolment patterns or artificially increased rates through counting multiple completions (e.g., through re-enrolments or re-qualifications).

Cohort-based qualification completion rate: This rate measures the number of learners who enrol in a qualification and successfully complete at the same level of qualification. Rates are shown for all learners and are separately broken down by learners studying full-time and part-time.

First year retention rate: This rate measures, for longer qualifications, how many learners are retained in study after the year they enter the cohort.

The methodology and rules for calculating these two rates can be found [here](#).



First Year Retention Rate

First year retention rates of 2014 starting cohort by levels

Overall	Example University	78%
	All Universities	77%
	All TEOs	72%
Level 8 to 10	Example University	77%
	All Universities	77%
	All TEOs	77%
Level 7 degree	Example University	78%
	All Universities	77%
	All TEOs	75%
Level 4 to 7 (non degree)	Example University	77%
	All Universities	72%
	All TEOs	56%

Overall TEO first year retention rate

78%

What are we delivering for future investment plan rounds

- › A detailed look at how we can effect more significant change in the education system.
- › Three key planks:
 - Information
 - Labour market outcomes
 - Capability and performance.
- › Consideration of what can delivered for the 2019/20 round, and beyond.



Using information

- › Using information to support smarter investment decisions.
- › Shared view leading to greater transparency and more informed conversations.
- › Providing access to information to learners and their influencers.



Labour Market Outcome Measures

Phase 1:

- › Provided EOTE national and provider level data to TEOs

Phase 2:

- › Work with the sector to agree what the data can tell us, and how collectively use/apply data.

Phase 3:

- › Look at what that might tell us about the purpose of provision and links with labour market outcomes.
- › Examples: How will the TEC approach using labour market outcome data in future investment plan rounds? Review and expand current measures in relation to purpose of provision? Are we better able to identify provision that has poor outcomes? Will it make comparisons between different types of provision with the same outcome?

Capability and performance

- › How can we work together to look at capability and performance across the sector?
- › Early stages – in early 2017, working with you to help shape this into something of value. Key questions:
 - What does this mean?
 - How can we deliver real benefit to providers?



Outcomes indicators and links to ROI

- › Underpins the capability and performance work.
- › Includes agreeing measures with the sector
- › Building real change from here in terms of economic and social outcomes.





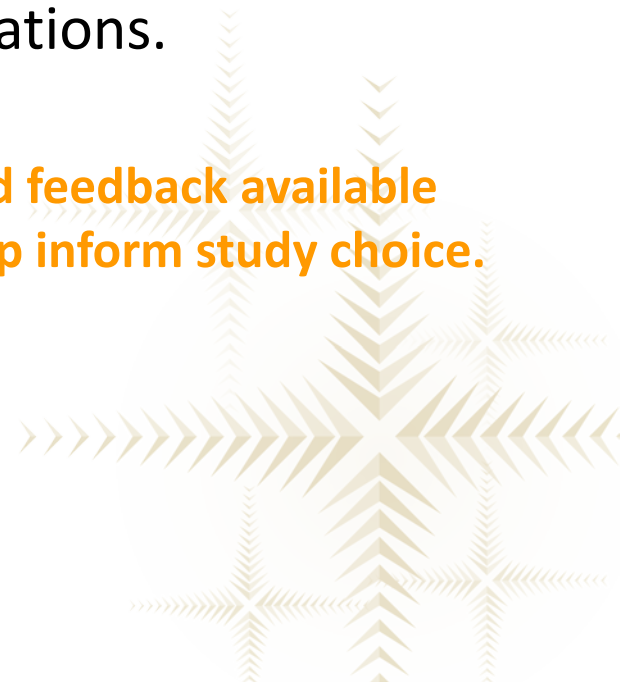
Using information for
better decision-making



Information for learners

TEC is developing new information tools for learners

- › The **Key Information Set** provides a consistent set of information and data for every TEC-funded, level 5 and above qualification.
- › **Rate My Qualification** gathers feedback from graduates and employers to inform learners about qualifications.
- › **These tools seek to strengthen the information and feedback available to prospective students about qualifications, to help inform study choice.**



For Learners: Key Information Set – accessible on TEO websites

KEY INFORMATION SET New Zealand Government

Diploma in Information and Communications Technology

Entry Requirements

Minimum requirements	NCEA or other evidence of literacy numeracy and ability to study at the appropriate level. See additional requirements for details.
<u>Additional requirements</u>	

Duration 2 years

Tuition Fees

Student fees	\$9,900
Government subsidy	\$12,028
Student loan information	StudyLink

Student Success

Successful course completions	73%
-------------------------------	-----

National Graduate Outcomes (3 years after completion)

Median earnings	\$34,600
Earnings range	\$29,500 - \$42,750
In employment	52%
In further study	37%
On a benefit	2%

Note: all information is the most recent available relating to domestic students only.
[Click here for more information about the Key Information Set.](#)

Diploma in Information and Communications Technology

Test

REQUEST INFORMATION

ADD TO MY STUDY OPTIONS LIST

Programme Code: CH4023
Level: 6
Credits: 240
Commences: February, July
Applications Due: Received all year
Annual Fees: \$6,200 - \$6,800
International Fees: \$15,150
Additional Costs: Advised before enrolment
Location: Mārea Street campus

Next steps

To apply for this programme please:

- complete an Admission and Enrolment Form or an International Application Form

If you don't meet the criteria for entry into this programme, we can help you meet entry level with our [foundation](#) and bridging programmes.

Alternatively, if you feel you have gained your learning through on the job experience talk to us about recognition or assessment of [prior learning](#).

Application documents

- Admission & Enrolment Form PDF File: 231.5 KB
- International Application Form PDF File: 171.2 KB

Recommended school subjects

- English
- Mathematics
- Computing/ICT

Key Information Set [newzealand.govt.nz](#)

Estimated Total Fees

Government Contribution (GST exclusive) \$16,216.00

Student Contribution (GST inclusive) \$12,279.00

For more information on fees and allowances visit [Student Loan Information](#)

Criteria
Minimum entry criteria
Evidence of literacy, numeracy and ability to study at the appropriate level. See additional criteria for details.
[Additional criteria](#)

Duration
2 Years

Student Success
Successful course completions within the qualification 71%
Students retained in study 75%

NZ Graduate Destinations
Young graduates in employment* 40%
Young graduates in further study* 40%
Median earnings of young graduates*

Example

For Learners: Key Information Set - available centrally

Information page

Key Information Set newzealand.govt.nz

Here's what you need to know
Use the Key Information Set to compare info across qualifications and education providers. You'll find it where you see qualifications info on tertiary education providers' websites.

Info about studying the qualification with this EDUCATION PROVIDER

ENTRY REQUIREMENTS
Qualifications or experience needed to start studying this qualification with this provider.

DURATION
The minimum amount of time it will take to complete the qualification with this provider.

TUITION FEES
Student fees – the estimated amount you will need to pay in tuition fees to study this qualification with this provider.
Government subsidy – the amount the Government subsidises your study for this qualification.

STUDENT SUCCESS
Successful course completions – the % of students who successfully completed courses for this qualification with this provider.

RETURN ON INVESTMENT
National info about outcomes of studying in this subject area.

MEDIAN EARNINGS
Median earnings of young graduates in employment two years after completing a qualification.

IN EMPLOYMENT
% of young graduates who are in any form of employment two years after completing a qualification.

IN FURTHER STUDY
% of young graduates undertaking further tertiary study two years after completing a qualification.

Example

Search page

Key Information Set newzealand.govt.nz

Use the search to find the Key Information Set for another qualification or provider. Enter the name and click

SEARCH

Provider:

Qualification:

SEARCH

DOWNLOAD

The Key Information Set is licensed under the [Creative Commons Attribution 4.0 International License](https://creativecommons.org/licenses/by/4.0/).

Disclaimer: The Tertiary Education Commission (TEC) takes care when compiling and maintaining the aggregated key information set but cannot guarantee and makes no representation as to its accuracy given that it comprises data from multiple sources. TEC will not be liable on any basis (including negligence) for any loss or damage of any kind you may incur in connection with your use of the data or any reliance you may place upon the data.

RELATED INFORMATION

- Student Loans Information
- Qualification Search

What is RMQ?

Informing prospective learners

A **satisfaction survey** developed to give graduates a consistent and independent channel to provide feedback on:

- › overall satisfaction of a qualification completed by a graduate at a particular provider
- › perceptions of how well the qualification prepared the graduate for work



Who is RMQ for?



For learners

- › a tool for learners designed by learners
- › published results from graduates to inform and support prospective learners in their decision-making

For TEOs

- › to provide them with additional information for consideration when delivering qualifications

For employers

- › to allow them to engage and feedback on the relevance of qualifications to their organisation/industry (*at a later stage*)



The online experience for TEOs

launching early November 2016

Public website:
www.tec.govt.nz

- Updated look and feel
- Improved navigation
- Revised content (over time)
- Focus on TEOs
- Portal log in

Secure portal:
An external
version of Ngā
Kete

- Browse and search multiple sites – public and private
- Personalised access for each TEO to see their own documentation online
- Access to the Information Product Library

Information
product library:
3 new tools

- Four new tools in development – 3 launching in November
- Online help and training



A refreshed website

Meeting our customers needs

- › Improved search function, navigation, labelling and structure.
- › More information about the TEC's identity, purpose and our people.
- › Improved site structure.
- › Greater reflection of te reo Māori.
- › Refreshed content written in plain English.
- › Updated look and feel.
- › Mobile friendly.





KEY DATES

01

JANUARY 1970

New [TEC] Key date page



23

AUGUST 2016

Server went live



30

OCTOBER 2016

Submissions due



[View all important dates](#)



WHAT'S NEW

[Entrepreneurial Universities](#)

[DualPathways Pilot](#)

[Performance of TEOs - EPI reports](#)

[KIS design and implementation](#)

[Centres for Asia-Pacific Excellence](#)

[SAC Levels 3 & 4 competitive pilot](#)

[Our case studies](#)

[Audits, reviews and investigations](#)

SYSTEMS AND TOOLS



[Workspace 2](#)



[STE0 \(SDR & ESAA\)](#)



[Ngā Kete](#)



[Literacy and Numeracy Assessment Tool](#)



[Industry Training Register](#)



[Support](#)

NZQA

NEW ZEALAND QUALIFICATIONS AUTHORITY
TE Kaitiaki Take Kōwhiri Mātauranga
QUALITY FOR THE FUTURE WORLD
KA HOKI TAKATO KI TE AHAU KAI

MINISTRY OF EDUCATION
TE TĀHURU O TE MĀTAURANGA

careersnz
mana rapuara aotearoa

**MINISTRY OF BUSINESS,
INNOVATION & EMPLOYMENT**
MINISTARI MĀHARAU, KŌHĀHĀ
& WHIRI KĀHĀHĀ

**NEW ZEALAND
NOW**

EDUCATION LIBRARY

e-e
ENGINEERING
EDUCATION/EMPLOYMENT

**SKILLS
HIGHWAY**
Take your business places

**REGIONAL ECONOMIC ACTIVITY
REPORT**

Regional
Economic Activity
Report





Funding and performance » Funding and performance » Explore funding information » Fund finder » Gateway » Eligibility

Eligibility

LAST UPDATED 28 SEPTEMBER 2016

PRINT SHARE

TEO eligibility

READ MORE +

Programme eligibility

To be eligible for funding, Gateway programmes must:

- lead to credits that contribute to the award of a National Certificate in Educational Achievement (NCEA) and/or qualification on the NZQF
- allow senior school students to participate in structured workplace learning, including the assessment and recognition of that learning in the form of credits, and
- integrate workplace learning with a student's wider course of study.

For further information see your funding confirmation letter: Appendix Three: Gateway Funding Conditions "Programme eligibility" for further detail

READ LESS -

Student eligibilty

READ MORE +

Provide feedback on this page



IN THIS SECTION

Eligibility

Monitoring and reporting

Conditions

Funding and payments



Tertiary Education Commission
Te Amorangi Mātauranga Matua



Ingarihi **Māori**

Me'a fund



Search



Website search

Ngā Kete



Rapu Arā

Mō tatou | Whakapā mai | Tiki whakahōunga



Kāinga



Tō Mātou Aronganui



Ngā Pūtea me Ngā Whakatutukitanga



Te Mahitahi me Ngā Kura Mātauranga Matua



Kawepūrongo, Whakawhitinga Kōrero



Rauemi



News story te reo



Tertiary Education Commission
Te Amorangi Mātauranga Matua



What is the Single Data Return?

The Single Data Return (SDR) is an electronic database of learner enrolment and completion information required by the Ministry of Education (the TEC).

The data is used for:

- monitoring performance against your Investment
- funding and
- publishing performance information
- statistical reporting.

Student Achievement Component (SAC)

The SAC is the government funding contribution or subsidy to the costs of teaching and learning and other costs driven by student numbers.

[VIEW IN GLOSSARY](#)

Who needs to complete a SDR?

All tertiary education organisations (TEOs) that receive Student Achievement Component (SAC) funding, Youth Guarantee (YG) funding, and/or have students with student loans or allowances, need to complete an SDR three times a year (see the [submission dates](#)).





Kāinga



Tō Mātou
Aronganui



Ngā Pūtea me Ngā
Whakatutukitanga



Te Mahitahi me
Ngā Kura
Mātauranga
Matua



Kawepūrongo,
Whakawhitinga
Kōrero



Rauemi



Funding and performance » Funding and performance » Explore funding information » Fund finder

Fund finder

Select a fund

Select a fund



OR

Select your search criteria

Fund type



Show all

Teaching and learning

Literacy and Numeracy and English for Speakers of Other Languages

Adult and Community Education

Industry

Research capability

IN THIS SECTION

Funding and performance

Audits, reviews and investigations

Explore funding information

Fund finder

ACE

Adult and Community Education
Professional Development

Adult Literacy Educator Fund

Centres of Asia-Pacific Excellence
(CAPEs)

Centres of Research Excellence

DualPathways Pilot

Emergency Management (ACE)

Some changes

- › New 'TEC News' emails will replace the old 'TEC Now' emails.
- › Embedded FAQs into relevant content.
- › News 'carousel' on the home page.
- › Key dates on the home page.
- › New RSS feed – please re-subscribe.

Keep in touch, there is a feedback form on the refreshed website we'd love to hear your thoughts.



The god Tāne travelled to the highest heaven to collect the baskets of knowledge and bring them back to humankind.

This was the origin of knowledge.

The three baskets of knowledge



Ngā kete e toru o te mātauranga

Ngā Kete – your secure doorway to search or browse for information across multiple sources

TEO staff can apply for (or modify their existing) ESAA log in so they can log into Ngā Kete to search or browse all of these information sources at once

Public sources

www.tec.govt.nz

www.pathwaysawarua.com

www.skillshighway.govt.nz

www.education.govt.nz

Quick links to specific pages on other relevant websites

Private & secure sources

WorkSpace2

Information product library

Quick links to SDR, WorkSpace2, NZBiT



Ngā Kete – the secure doorway to search or browse for information across multiple sources

Useful for finding what you need:

- › Looking for general information about tertiary education
- › Accessing specific information products to better understand tertiary education provision and your part in it
- › View your documents from WorkSpace2
- › Quick links to other useful web sites (like NZBiT) and pages on other sites (like MBIE and Treasury)

Relationship to SDR and Workspace2:

- › This additional service does not affect your current processes.
- › You will still need to access the data collection systems (STEO and WorkSpace2) directly to complete any data upload activities - as you currently do.

Log in from any TEC webpage

The screenshot displays the Tertiary Education Commission (TEC) website interface. At the top left, the TEC logo is visible, featuring a stylized orange and white geometric design. The main navigation bar includes links for 'Fund finder' and 'Ngā Kete login', both highlighted with orange circles. A search bar is located in the top right corner. Below the navigation bar, a horizontal menu contains links for 'Home', 'Our focus', 'Funding and performance', 'Working with tertiary education organisations', 'News and consultations', and 'Resources and publications'. A large image of students in a classroom is shown, with a yellow overlay containing the text 'News story te reo'. Below this image, a yellow button labeled 'News story te reo' is visible. At the bottom of the page, there is a section titled 'INFORMATION FOR' with three sub-links: 'Council members', 'People in training or tertiary study', and 'Industry training organisations'. The footer contains the text 'Welcome to the Tertiary Education Commission/Te Amorangi Mātauranga Matua. We are a Crown Agency' and a Māori phrase: 'Naku te rourou nau te rourou ka ora ai te iwi'.

Search or browse.



Ngā Kete

Welcome gmconch | ♥ Favourites | Sitemap

Search...

TERTIARY EDUCATION ORGANISATIONS...

EDUCATION SECTOR AGENCIES...

WHAT'S IMPORTANT

Delivery trends and profiles app School transition app New Zealand Benchmarking Tool

Regional Economic Activity Report (MBIE) Qlik Test app Investment approach Regional provision app

Plan Summary Review - Open Cubes Commitments app

What you need to know



Search results



Ngā Kete

Welcome gmconch | Favourites | Sitemap

[Home](#) | [Search Results](#)

Results for

FAVOURITE RATE HELP

performance

1 - 50 of about 50 results.

Sort by **Relevance**

Page filter

Source

Skills Highway

[Apply](#) | [Clear](#)

Skills Highway |

HTML [0 KB] | FAVOURITE

Open main menu Close main menu ... Skills Highway is your road to better business performance ... how workplace literacy and numeracy training can help them improve business performance ...

Date: 16 October 2016 | Source: Skills Highway

Leadership Development New Zealand | Skills Highway

HTML [0 KB] | FAVOURITE

developing high performance teams learning on the job managing performance developing the leader as coach getting ...
TEO-led Workplace Literacy and Numeracy PLACES AVAILABLE Leadership and Management Development Website:
www.leadershipdevelopment.co.nz

Date: 16 October 2016 | Source: Skills Highway

University of Waikato | Skills Highway

HTML [0 KB] | FAVOURITE

processes and practices for improved performance through a LLN training programme designed ... their systems, procedures and practices is key to addressing workplace performance ...

Employer-led Workplace Literacy and Numeracy Website: education.waikato.ac.nz/professionalllearning/lln/lln-initiatives/workplace-lln/



An information product library for TEOs

Information product library

A range of tools to support smarter decision making, internally and externally.

- › Supporting investment discussions by making information more easily available
- › Developing and enhancing the library of products over time based on your feedback



Four tools in initial development – three launching now

An app focused on **Secondary to Tertiary Transition** allows TEOs to explore the transition of school leavers into tertiary education

An app focused on **Tertiary Provision** will show in what and where learners are enrolling .(limited to SDR enrolments only)
This will be useful in seeing enrolment demand within and across locations

My Provision app will show in what and where learners are enrolling – for your TEO only (down to NSN level and for SDR enrolments only)

An app focused on commitments will allow TEOs to explore what TEOs have committed to in their Plans, and their performance against these commitments – for launch in early 2017

Let's take a look...





Conclusion

Thankyou

- › Your feedback is important to us – watch out for our email/survey.
- › Presentation available on the TEC website from early November.
- › Lunch – please join us.

